

# Tata Focused Fund

## Takes the blur out.

### **TATA** **FOCUSED FUND**

(An Open Ended Equity Scheme investing in maximum 30 stocks across market caps (i.e. Multi Cap))

As on 30th June 2025

#### DATE OF ALLOTMENT

December 05, 2019

#### BENCHMARK

NIFTY 500 TRI

#### FUND SIZE

Rs. 1847.49 Crores

#### MONTHLY AVERAGE AUM

Rs. 1817.05 Crores

#### FUND MANAGER

Meeta Shetty (Managing Since 11-Apr-22)

Hasmukh Vishariya

(Managing Since 01-Mar-25)

#### EXPENSE RATIO\*\*

Direct - 0.63

Regular - 2.03

#### EXIT LOAD

1) Exit Load is Nil, if the withdrawal amount or switched out amount is not more than 12% of the original cost of investment on or before expiry of 365 days from the date of allotment.

2) Exit load is 1% of the applicable NAV if the withdrawal amount or switched out amount is more than 12% of the original cost of investment on or before expiry of 365 days from the date of allotment.

3) No Exit load will be charged for redemption or switch out after expiry of 365 days from the date of allotment.

#### MINIMUM INVESTMENT

Rs. 5,000/- and in multiples of Re. 1/- thereafter.

\*\*Note: The rates specified are actual month end expenses charged as on June 30, 2025. The above ratio includes the Service tax on Investment Management Fees. The above ratio excludes, borrowing cost, wherever applicable.



### FUND OVERVIEW

Tata Focused Fund aims to generate returns by investing in stocks with long runways for growth regardless of market cap or sector. With a bottom up stock picking approach, the fund aims to carefully analyse and invest in compounding stocks following the GARP—Growth At Reasonable Price philosophy.



### PORTFOLIO CONSTRUCTION

Portfolio constructed on the principles of low churn, active positions and concentration



- Upper limit of no. of stocks in the portfolio
- capped at 30.

Portfolio to reflect Fund Manager's conviction.



- Buy and hold predominant approach.
- Look for businesses with long runway for growth and remain invested as they scale up.



- Portfolio construction driven by bottom up stock selection and not by the benchmark.

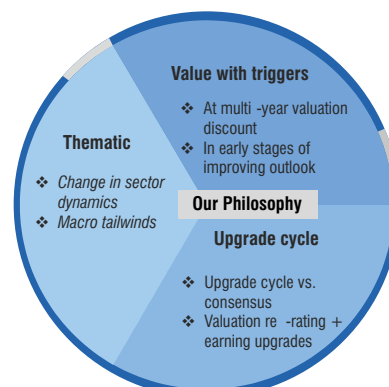


### GROWTH AT REASONABLE PRICE - GARP

Our investment philosophy is to navigate between the two extremes of Growth at any price and Deep Value, through a combination of the two—Growth at Reasonable Price.

#### DEEP VALUE

*Valuation is right, timing may or may not be*



#### GROWTH AT ANY PRICE

*Typically associated with high perceived quality*

\*each investment decision to be in conformity with the portfolio characteristics / process mentioned in the SID. \*\*Based on current market views & subject to change.



## STOCK SELECTION

Through a Sector and Market Cap agnostic approach, the fund aims to invest in compounding stocks with long runways for growth.

### COMPOUNDING STOCKS



- Companies with a long runway for growth.
- Ability to grow earnings sustainably.
- Efficient Capital Management.
- Management quality.

### SECTOR AGNOSTIC



- Bottom up approach to investing.
- Business fundamentals and valuations to be primary driver of stock selection.

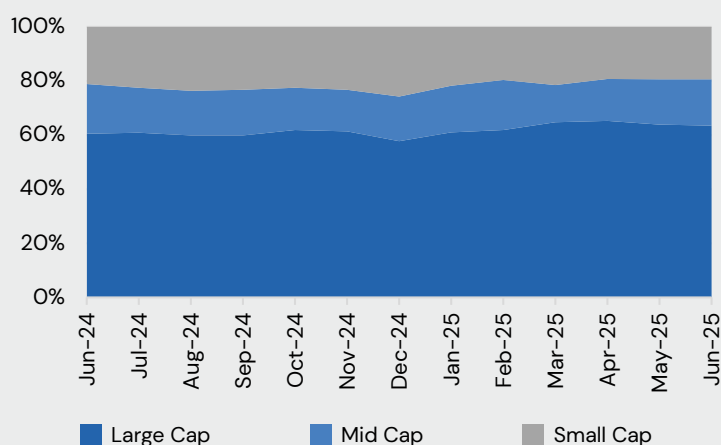
### MARKET CAP AGNOSTIC



- No specific market cap tilt.
- Proportion of mid cap/small cap to be governed by the relative risk reward opportunity.
- Risk management framework to act as a guard rail.



## MARKET CAPITALISATION TREND



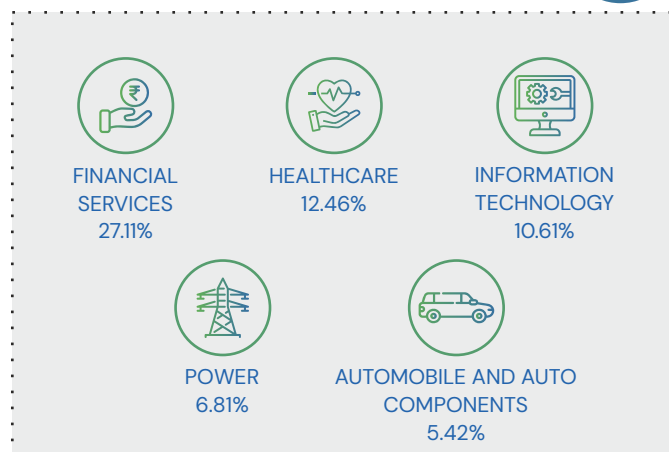
## STYLE BOX



## TOP 10 HOLDINGS

Issuer Name	% to NAV
HDFC Bank Ltd.	9.61
Tech Mahindra Ltd.	8.44
Axis Bank Ltd.	7.46
ICICI Bank Ltd.	5.54
Reliance Industries Ltd.	4.52
Firstsource Solutions Ltd.	4.00
Amber Enterprises India Ltd.	3.51
Apollo Hospitals Enterprise Ltd.	3.48
Samvardhana Motherson International Ltd.	2.99
Alkem Laboratories Ltd.	2.82
<b>Total</b>	<b>52.37</b>

## TOP 5 SECTORS



### Product Label

**This product is suitable for investors who are seeking\*:**

- Long Term Capital Appreciation.
- Investment in equity/equity related instruments in a concentrated portfolio of maximum 30 stocks across market capitalisation.

**\*Investors should consult their financial advisors if in doubt about whether the product is suitable for them.**

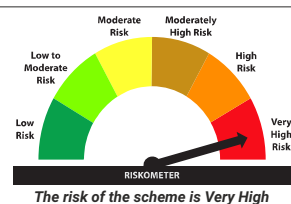
It may be noted that risk-o-meter specified above is based on the scheme characteristics. The same shall be updated in accordance with provisions of SEBI circular dated October 5, 2020 on Product labelling in mutual fund schemes on ongoing basis.

### DISCLAIMERS AND OTHER STATUTORY DISCLOSURES

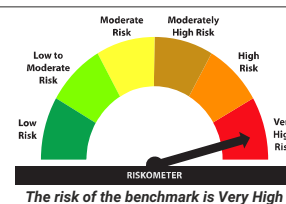
Market capitalization as per SEBI circular: A) Large Cap: 1st-100th company in terms of full market capitalization. B) Mid Cap: 101st-250th company in terms of full market capitalization. C) Small Cap: 251st company onwards in terms of full market capitalization.

For detailed month end portfolio and scheme performance in SEBI prescribed format, please visit: [www.tatamutualfund.com](http://www.tatamutualfund.com)

### Tata Focused Fund



### NIFTY 500 TRI



**Mutual Fund Investments are subject to market risks, read all Scheme related documents carefully.**